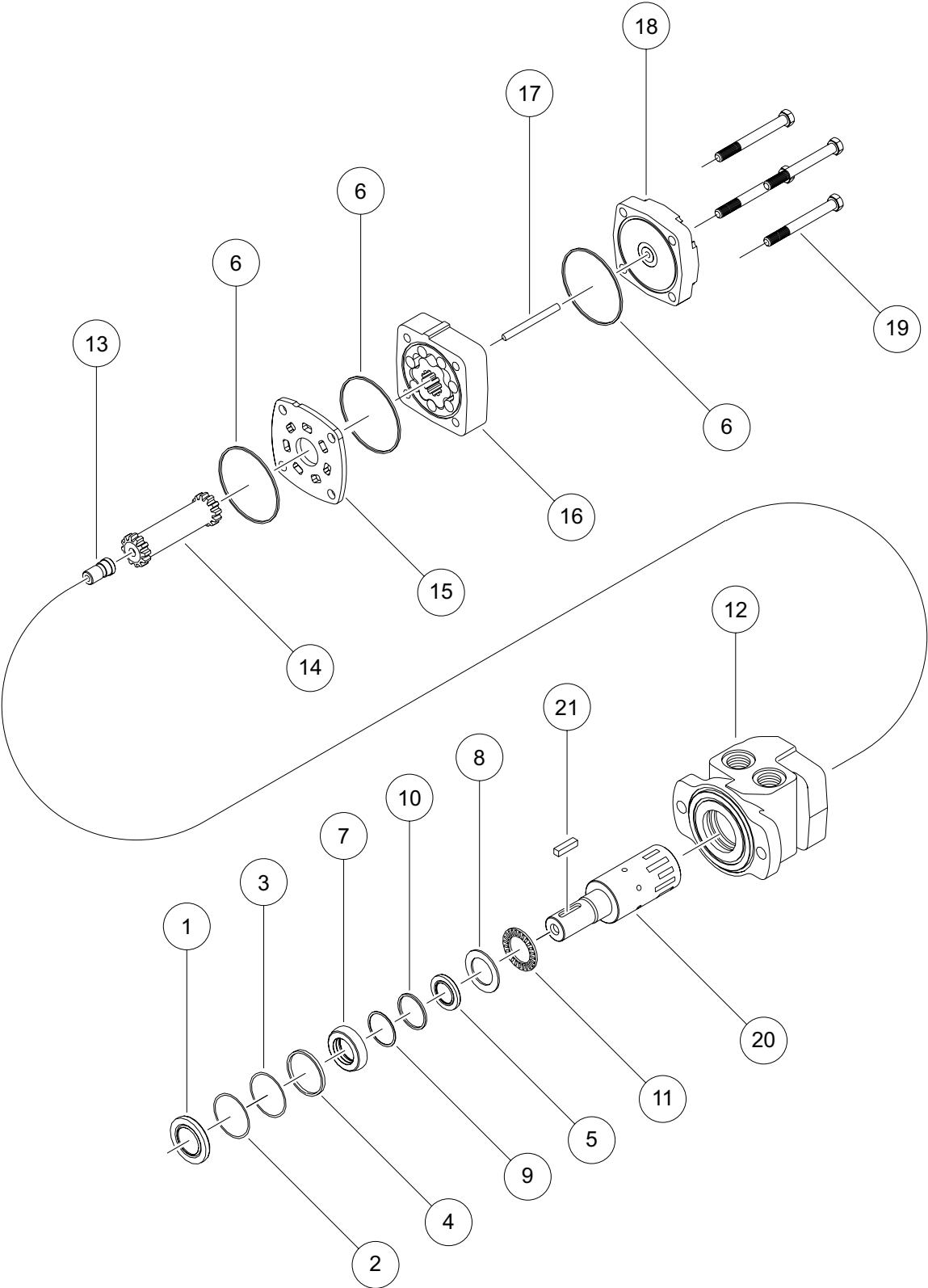


RS (200) SERIES MOTOR



RS (200) SERIES MOTOR COMPONENTS

SEAL KITS

DESCRIPTION	ITEM #	PART/KIT
DUST SEAL	1	
SPLIT WIRE RING	2	ITEMS #1-6 INCLUDED
METAL BACKUP SHIM	3	IN SEAL KIT 200222002B
HIGH PRESSURE SEAL	4	(BUNA SHAFT SEAL)
SHAFT SEAL	5	
BODY SEAL (3)	6	ITEMS #1-8 INCLUDED
SEAL CARRIER	7	IN SEAL KIT 200222001B
THRUST WASHER	8	(BUNA SHAFT SEAL)
BACKUP SHIM	9	
BACKUP SEAL	10	ITEMS #1-10 INCLUDED IN SEAL KIT 200222001 (VITON SHAFT SEAL)

MISCELLANEOUS KITS

DESCRIPTION	ITEM #	PART/KIT
THRUST BEARING	11	200018011
COOLING PLUG	13	200018999
WEAR PLATE	15	200012000
MID MOUNT WEAR PLT.	15	200012001
ENDCOVER	18	200016003
1000 PSI RELIEF VALVE	NOT SHOWN	500018228
2000 PSI RELIEF VALVE	NOT SHOWN	500018231
3000 PSI RELIEF VALVE	NOT SHOWN	500018221
3/4-28 SLOTTED NUT	NOT SHOWN	200229300
3/4-28 LOCK NUT	NOT SHOWN	200018077
MANIFOLD SEAL	NOT SHOWN	200018022

ROTORS, DRIVE LINKS AND SPACERS, AND BOLTS

WHEN CHANGING MOTOR DISPLACEMENTS, A MATCHING DRIVE LINK KIT, DRIVE LINK PIN KIT, AND BOLT SET KIT MUST ALSO BE ORDERED

EXPLODED VIEW ITEM #	16	16	14	17	19
DISPLACEMENT	STANDARD ROTOR KIT	FREETURN ROTOR KIT	DRIVE LINK KIT	DRIVE LINK PIN KIT	BOLT SET KIT
050	200037003	200037005	200014002	200224003	200225003
080	200047004	200047005	200014002	200224008	200225004
090	200067010	200067012	200014001	200224005	200225004
100	200997001	N/A	200014001	200224008	200225010
110	200087003	200087004	200014001	200224006	200225005
125	200097003	200097004	200014001	200224008	200225010
160	200107009	200107010	200014003	200224010	200225010
200	200127009	200127011	200014003	200224012	200225012
250	200147005	200147006	200014003	200224014	200225014
300	200187009	200187011	200014003	200224018	200225018
400	200247009	200247011	200014003	200224024	200225024

HOUSING KITS

(EXPLODED VIEW ITEM #12)

BECAUSE THE HOUSING AND SHAFT ARE MATCH GROUND AS A SET TO EXTREMELY TIGHT TOLERANCES AT THE FACTORY, WHITE DRIVE PRODUCTS DOES NOT RECOMMEND THAT INDIVIDUAL HOUSINGS OR SHAFTS BE ORDERED TO REPAIR A MOTOR. IT IS RECOMMENDED THAT A MATCHED SET BE ORDERED. TO ORDER A MATCHED HOUSING/SHAFT KIT, SEE THE HOUSING/SHAFT KITS LISTING BELOW RIGHT.

DESCRIPTION	HOUSING KIT	DESCRIPTION	HOUSING KIT
#F30- 4-HOLE W/ 1/2" NPT	200013401	#G38- 4-HOLE METRIC MOUNT W/ 1/2" BSP.F	200013403
#F31- 4-HOLE W/ 7/8" O-RING	200013301	#G17- 2-HOLE METRIC MNT. W/ MANIFOLD PORTS	200013702
#A10- 2-HOLE W/ 1/2" NPT	200013201	#A62- 2-HOLE W/ 1/2-14 BSP.F AND .200 PILOT	200013606
#A11- 2-HOLE W/ 7/8" O-RING	200013101	#A63- 2-HOLE W/ OFFSET MNFLD. AND .200 PILOT	200013605
#F37- 4-HOLE W/ MANIFOLD PORTS	200013501	#A19- 2-HOLE W/ OFFSET 7/8" O-RING & VALVE CAVITY	200013105
#A17- 2-HOLE W/ MANIFOLD PORTS	200013700	#F39- 4-HOLE W/OFFSET 7/8" O-RING & VALVE CAVITY	200013304
#A12- 2-HOLE W/ OFFSET 1/2" BSP.F	200013601	#A68- 2-HOLE W/ ALIGNED 1/2"-14 BSP.F AND .200 PILOT	200013607
#A13- 2-HOLE W/ OFFSET MNFLD. W/ 1/2" BSP.F	200013600	#A67- 2-HOLE W/ ALIGNED MANIFOLD AND .200 PILOT	200013703
#A1A- 2-HOLE W/ ALIGNED 1/2" BSP.F	200013602	#B18- 2-HOLE SAE B W/ ALIGNED 1/2" BSP.F	200013612
#A51- 6-HOLE W/ 7/8" O-RING	200013103	#B10- 2-HOLE SAE B W/ ALIGNED 1/2" NPT	200013203
#A50- 6-HOLE W/ 1/2" NPT	200013202	#B11- 2-HOLE SAE B W/ ALIGNED 7/8" O-RING	200013106
#A70- 2-HOLE W/ 1/2" NPT SIDE PORTS	200013204	#B70- 2-HOLE SAE B W/ 1/2" NPT SIDE PORTS	200013205
#A71- 2-HOLE W/ 7/8" O-RING SIDE PORTS	200013108	#B71- 2-HOLE SAE B W/ 7/8" O-RING SIDE PORTS	200013109
#A72- 2-HOLE W/ 1/2" BSP.F SIDE PORTS	200013610	#B78- 2-HOLE SAE B W/ 1/2" BSP.F SIDE PORTS	200013611
#A18- 2-HOLE ALIGNED W/ 1/2" BSP.F	200013604		

SHAFTS AND RELATED COMPONENTS KITS

SHAFT KITS COME WITH RELATED SHAFT COMPONENTS (i.e. keys, nuts, etc.) TO ORDER INDIVIDUAL KEYS, USE THE KEY KIT NUMBER. TO ORDER NUT KITS (FOR #13 SHAFT), SEE MISCELLANEOUS KITS LIST ABOVE.

EXPLODED VIEW ITEM #	20	21
DESCRIPTION	SHAFT KIT	KEY KIT
#05- 1" WITH .373 PINHOLE	200011000	---
#53- 1" WITH .406 PINHOLE	200011001	---
#10- 1" STRAIGHT	200011100	200229100
#02- 6-B SPLINE	200011600	---
#01- 13 TOOTH SPLINE	200011700	---
#12- 25MM STRAIGHT (8MM KEY)	200011101	200229101
#13- 1" TAPERED (WITH LOCKNUT)	200011103	200229102
#18- 25MM STRAIGHT (7MM KEY)	200011104	200229103
#03- 6-B EXTENDED NOSE	200011602	---
#15- 1" STRAIGHT SPEED SENSOR	200011106	200229100
#16- 25MM STRAIGHT SPEED SENSOR	200011107	200229101
#11- 1" STRAIGHT W/ METRIC THREAD	200011108	200229100

HOUSING/SHAFT KITS

HOUSING/SHAFT KITS COME WITH ITEMS 12, 13, 20 & 21.

TO ORDER A MATCHED HOUSING/SHAFT KIT, PLEASE CONTACT A WHITE DRIVE PRODUCTAS CUSTOMER SERVICE REPRESENTATIVE.