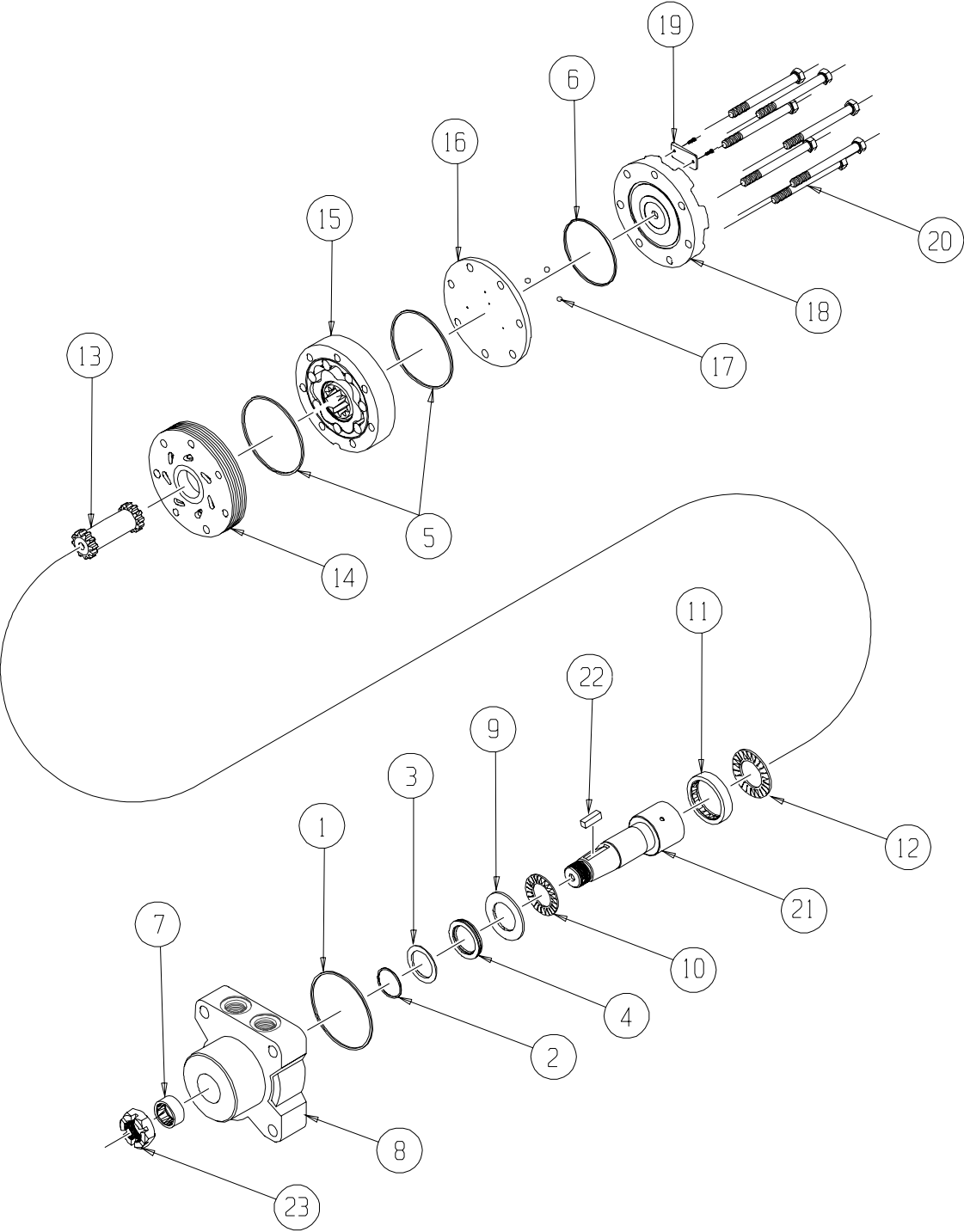


# CE (400) Series



# CE (400) SERIES MOTOR COMPONENTS

## SEAL KIT 400444200

DESCRIPTION	EXP. VIEW ITEM #	KIT
HOUSING SEAL	1	ITEMS # 1-6 INCLUDED IN SEAL KIT 400444200
METAL SHIM	2	
TEFLON BACK-UP SEAL	3	
SHAFT SEAL	4	
BODY SEALS (2)	5	
ENDCOVER SEAL	6	
NOTE: REAR BEARING (#11) MUST BE REMOVED TO REPLACE SEAL KIT ITEMS #2-4. IT IS RECOMMENDED THAT A NEW REAR BEARING BE INSTALLED WHEN REPLACING THESE ITEMS.		

## MISCELLANEOUS KITS

DESCRIPTION	EXP. VIEW ITEM #	KIT
FRONT HOUSING BEARING	7	400180001
FRONT THRUST WASHER	9	500018253
FRONT THRUST BEARING	10	500018252
REAR HOUSING BEARING	11	500018002
REAR THRUST BEARING	12	500018059
FORWARD MANIFOLD (CCW O R"0")	14	500015006
REVERSE MANIFOLD (CW OR "1")	14	500015007
BALANCE PLATE	16	500012001
STEEL BALLS (3)	17	500018048
ENDCOVER	18	500016001
1000 PSI RELIEF VALVE	NOT SHOWN	500018228
2000 PSI RELIEF VALVE	NOT SHOWN	500018231
3/4-28 SLOTTED NUT	NOT SHOWN	200229300
3/4-28 PACK NUT	NOT SHOWN	200018077
1.00-20 UNEF SOLID NUT	24	500449303
1.00-20 UNEF LOCK NUT	24	300339303P
1.00-20 UNEF SLOTTED NUT	24	500449304

## ROTORS, DRIVE LINKS AND SPACERS, AND BOLTS

WHEN CHANGING MOTOR DISPLACEMENTS, A MATCHING ROTOR AND BOLT SET KIT MUST BE ORDERED. A NEW DRIVE LINK KIT MAY BE NECESSARY.

EXPLODED VIEW ITEM #	15	15	13	20
DISPLACEMENT	STANDARD ROTOR KIT	FREETURN ROTOR KIT	DRIVE LINK KIT	BOLT SET KIT
120	500087005	500087008	400140007	500445006
160	500137005	500137011	400140007	500445006
200	500167004	500167011	400140012	500445012
230	500147002	500147004	400140014	500445014
260	500227000	500227004	400140016	500445014
300	500247005	500247011	400140018	500445018
350	500207000	500207004	400140020	500445026
375	500307005	500307011	400140024	500445024
470	500357003	500357005	400140020	500445026
540	500407005	500407011	400140032	500445032
750	500607005	500607011	400140045	500445045

## HOUSING KITS

HOUSING KITS INCLUDE THE FRONT BEARING (#7), METAL SHIM (#2), TEFLON BACK-UP SEAL (#3), AND SHAFT SEAL (#4) INSTALLED IN THE HOUSING.

DESCRIPTION	EXPLODED VIEW ITEM #	HOUSING KIT
#W38- WHEEL MOUNT W/1/2" BSP.F PORTS	8	400130005
#W31- WHEEL MOUNT ( 7/8" O-RING PORTS)	8	400130007
#K31- WHEEL MOUNT W/BRAKE MOUNT (7/8" O-RING PORTS)	8	400130011
#K38- WHEEL MOUNT W/BRAKE MOUNT (1/2"-14 BSP.F PORTS)	8	400130031
#W38- WHEEL MOUNT WITH VALVE CAVITY (1/2"-14 BSP.F PORTS)	8	400130035
#W31- WHEEL MOUNT W/VALVE CAVITY (7/8" O-RING PORTS)	8	400130037

## SHAFTS AND RELATED COMPONENTS KITS

SHAFT KITS COME WITH RELATED SHAFT COMPONENTS (i.e. keys, nuts, etc.)

TO ORDER INDIVIDUAL SHAFT COMPONENTS (i.e. keys, nuts, bolts, washers or wire rings) USE THE KIT NUMBER FOR EACH INDIVIDUAL PART.

EXPLODED VIEW ITEM #	21	22	23	NOT SHOWN	NOT SHOWN	NOT SHOWN
DESCRIPTION	SHAFT KIT	KEY KIT	NUT KIT	BOLT KIT	WASHER KIT	WIRE RING KIT
#10- 1" STRAIGHT	400110000	500449100		---	---	---
#13- 1" TAPERED	400110001	200229102	SEE MISC. KITS LIST	---	---	---
#02- 6-B SPLINE (1")	400110002	---		---	---	---
#22- 1-1/4" TAPERED	400110003	500449101		---	---	---
#20- 1-1/4" STRAIGHT	400110004	500449102		500449301	500449302	500449201
#23- 14 TOOTH SPLINE (1-1/4")	400110005	---		---	---	500449201
#25- 1-1/4" TAPERED EXTENDED	400110010	200229102		---	---	---